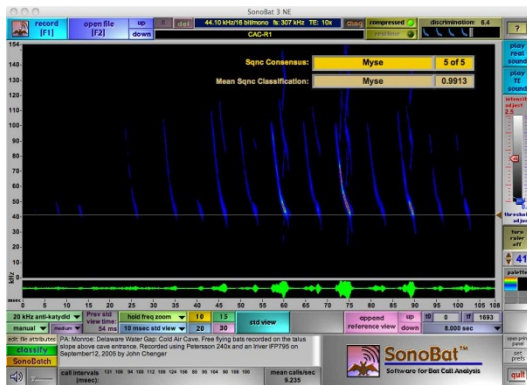




NEW CENTURY ENVIRONMENTAL IN 2016

NCE has great expertise in **bird and bat monitoring**. Research and field experience has enabled us to refine and perfect state-of-the-art approaches in bat and bird monitoring in the Great Plains area. Although bat and bird work is necessarily affected by the vagaries of local and regional populations, NCE's innovative and economical approaches are easily extendable to locations outside of the Great Plains area.



Advances in microelectronics, computing, and acoustics have made it cost-effective to obtain bat data sufficient for permitting and compliance through the recording and analysis of bat vocalizations alone. NCE can help you determine your project impacts with state-of-the-art bat recording and analysis today, and together we'll find an optimum strategy for success.

General Compliance Support

- *Wind farm development, permitting and monitoring*
- *FERC Re-licensing support*
- *Nuclear license renewal*
- *NEPA related projects for new Combined Operating License Applications (COLA) for nuclear power plant reactors*

- *Review data reports and write all or portions of project technical and summary reports including Environmental Review sections for COLAs and work with NUREG-1555 requirements for new applications*
- *New plant construction and combined operating license environmental report review and filing , desktop environmental studies through EIS*
- *Eco-asset inventory, planning and development*
- *Clean Water Act compliance*
- *Utility route selection studies*
- *Procedure development and implementation*
- *Property development permitting*
- *Environmental auditing*
- *All natural resource and facility mapping*
- *Pollution impact and assessment*
- *Remediation support*
- *Environmental System Management*
- *Pollution Prevention*



Clean Water Act (CWA), National Environmental Policy Act (NEPA), and Environmental Impact Statement (EIS), and Threatened and Endangered Species (TES) surveys and Section 7 and 10 Endangered Species Act (ESA) Consultation

- *All aspects of New Construction Permitting-Federal, State, County, Municipal*
- *Clean Water Act Section 404 Permit development and studies*
- *Environment Assessment Report (EAR) preparation*
- *EIR / EIS Review and Preparation, NEPA Support Studies and Documentation*
- *T&E Species Investigations / Section 7 ESA Consultation*
- *CERCLA / Superfund Studies support*
- *Assessment Reports and Best Management Practices (BMPs)*
- *NRDA / Risk Assessment/Customized Damage Assessment Investigations*
- *Comprehensive Natural Resource Studies Biological Assessments*
- *Agency consultation, negotiation*
- *Construction and Mitigation Monitoring Review of Natural Resources Policy*
- *Integrated Resource Management Planning Mitigation and Compensation Planning*
- *Habitat Conservation Planning Land Use Impact Assessment*
- *Field Surveys (physical, chemical and biological)*

- *Critical Habitat Identification*
- *Habitat Mapping (GIS)*
- *Incidental Take Permitting*
- *Mitigation/avoidance plans*
- *Formal and Informal Agency Consultation*
- *Critical Literature Review*
- *Description of Current Conditions*
- *Cumulative Impact Assessment*

Water Quality Management

- *Watershed Assessment and Mapping*
- *Stream Inventory, Classification and Mapping*
- *Instream Flow (IFIM, Tennant)*
- *Nutrient and Temperature Studies and Modeling*
- *Section 316 (a) and (b) support*
- *CWA Section 401 Certification*
- *National Pollutant Discharge Elimination System (NPDES) studies/support*
- *Water Quality Assessments and Long Term Monitoring NPDES and Non-Point Source (NPS) Investigations / Support*
- *Stormwater Management Plans*
- *EPA Effluent Guidelines Review*
- *Discharge and Pretreatment Permit Support*
- *Floodplain/floodflow Analyses*
- *Geomorphic Investigations*
- *Hydraulic and Hydrologic Analyses*
- *Sediment Transport Analysis*
- *Comprehensive Water Quality Assessment and Monitoring*
- *Bioassays/Toxicity Test Evaluations*

Fisheries Science and Aquatic Resource Evaluation

- *Lake and Reservoir Fish Population Dynamics Studies*
- *Fish Community Assessment*
- *Threatened and Endangered Species Investigations*
- *Angler Use Studies*
- *Management Plan Development Mitigation Planning*
- *Food Habit Studies*
- *Fish Kill and Necropsy Investigations*
- *Fish Tissue Toxicity and Bioaccumulation Analyses*
- *Radio / Acoustic Tagging*
- *Fish and Benthic Studies and Analyses*
- *Riparian and Instream Habitat Inventories*
- *Instream Flow (IFIM) Studies (determination / support)*
- *Temperature Modeling (SNTEMP)*
- *Stream Habitat Improvement Design and Evaluation of Stream Use-Attainability Analysis*
- *Stream Corridor Inventory (SCIES)*
- *Mining Impact Studies*
- *Sediment Chemistry and Transport Studies*
- *Fish and Plankton Studies and Analyses*

- *FERC Relicensing Support Studies*
- *Habitat Assessment Habitat Improvement Design*
- *Macroinvertebrate Studies and Analyses Plankton and Periphyton Analyses*
- *Macroinvertebrate Bioassessments (EPA Protocols)*
- *Environmental Toxicology Evaluations*
- *Macroinvertebrate Tissue Bioaccumulation Analyses*
- *Zebra and other Mussel Studies*
- *Periphyton, Phytoplankton and Zooplankton Study and Analyses*

Wetland Investigations, Compliance, Sensitive Flora Surveys

- *Formal Determinations and Delineations Permit Assistance - Section 404 (CWA)*
- *Wetland Functional Evaluations*
- *Sensitive and Rare Plant Surveys*
- *Range / Vegetation Surveys and Habitat Mapping*
- *Landscape Ecology / Habitat Structure Ecological Modeling*
- *Riparian Habitat Restoration and Monitoring Aerial Photographic Analysis*
- *Wetland Mitigation Plan, Design, Implementation and Monitoring*
- *Complete restoration and enhancement services*
- *Aquatic plant surveys, mapping and control/development*

Property Development Services

- *Comprehensive Property Asset Mapping*
- *Cultural/historical and medicinal and rare plant surveys*
- *Botanical and upland survey*
- *Habitat Assessment and Population Surveys*
- *Consultation for and Development of Environmental Educational Facilities*
- *Road, Trail and Bridge Design, permit assistance and construction*
- *Design and Construction of Wildlife and Hunting Platforms*
- *Design and Construction of Handicap Accessible Facilities*
- *Design and Development of Wildlife Escape and Funnel areas*
- *Design and Construction of Hunting Blinds and Stands*
- *Integrated Livestock Management- Wildlife Conservation Plans*
- *Wildlife Food Plot Design and Implementation*
- *Installation and Maintenance of Supplemental Wildlife Feeders*
- *Development of Volunteer Wildlife Observation and Hunting Report Systems*
- *Small Pond Management*
- *Herpetofauna Investigations*
- *Threatened and Endangered Species Investigations*
- *Habitat Conservation Plans (HCPs) under ESA Natural Resource Management Planning*
- *Small Mammal Inventories Waterfowl Studies*
- *Upland Wildlife Investigations Big Game Inventories*
- *Cultural/Historical surveys of project area*

Wildlife Assessment and Management

- *Aerial Wildlife Surveys*
- *Line Transect and Infrared Camera Surveys*
- *Threatened and Endangered Species*

- *Small Mammal Trapping*
- *Shorebird, Songbird and Raptor Surveys*
- *Upland wildlife surveys*
- *Insect, Amphibian and Reptile Surveys*
- *Wildlife Population Estimates*
- *Critical Use Habitat Identification*
- *Mapping and Project Plan Development*

Support Services

- *Complete Biological Laboratory Services Data Analysis, Review and Verification*
- *Biostatistical Analyses Geospatial Services*
- *Critical Literature Review Technical Report Preparation and Review*
- *Training and Consultation Expert Witness Testimony*

Environmental Consulting Services

As professional ecologists and environmental scientists at New Century Environmental LLC, we have considerable experience conducting scientific studies and biological assessments. We pride ourselves in our ability to assess and understand even the most complex and unusual sites.

Our experience ranges from assessing fish populations, benthic communities, water quality, stream flow, and riparian and instream habitat in small streams to capturing scientific information in large rivers, to conducting limnological studies on large lakes and reservoirs, to all terrestrial and urban habitat settings.

Our projects typically involve collection, compilation, analysis and documentation of scientific data. We also assist our clients with study design, data review and verification, critical literature review, technical report preparation, project training, and expert witness testimony. We are called upon to formulate and implement various types of natural resource management plans. We look forward to supporting you in every way possible!





NEW CENTURY ENVIRONMENTAL LLC

678 SOUTH RED FOX LANE
COLUMBUS NEBRASKA 68601

402.562.9155 402.910.3533

www.newcenturyenvironmental.com